

REDUCED! CENTRAL BUSINESS DISTRICT



LUXURY 79 Asheland Avenue, Asheville

\$1,999,000 MLS#3831075
Commercial SqFt:1,648 Acr:0.29
Asheville Central Business District

IN BILTMORE FOREST WITH 2.42 ACRES



LUXURY 423VanderbiltRoad.com

\$1,850,000 MLS#3909862
Bed:5 BA:3/1 SqFt:4,589 Acr:2.42
Biltmore Forest

SCENIC AND PRIVATE



LUXURY 1300ElkMountainScenicHighway.com

\$1,795,000 MLS#3735729
Acr:13.94 Scenic and Private
Elk Mountain Estates

DOWNTOWN ASHEVILLE CONDO



LUXURY 100CoxeAvenue304.com

\$880,000 MLS#3914512
Bed:2 BA:2 SqFt:1,109 Condo
South Slope

REDUCED! BUSY COMMERCIAL AREA



LUXURY 1645PattonAvenue.com

\$850,000 MLS#3258015 Acr:1.76
Or divided lots: MLS#3855333,
MLS#3855319, or MLS#3855350

OWN A PART OF LOCAL HISTORY!



LUXURY 811ElkMountainScenicHwy.com

\$660,000 MLS#3869835
Acr:22.08 Mountain Views
Beaverdam Valley

REDUCED! LUXURY CONDO



LUXURY 201BowlingParkRoad, Asheville

\$535,000 MLS#3918909
Bed:3 BA:2 SqFt:1,364 Condo
Residences At Biltmore

INCOME-PRODUCING COTTAGE



375MillsGap.com

\$479,000 MLS#3919226
Bed:2 BA:2 SqFt:1,524 Acr:0.48
South Asheville

KRESS BUILDING DOWNTOWN CONDO



59 College Street Unit #402, Asheville

\$385,000 MLS#3940310
Bed:1 BA:1 SqFt:634 Condo
Asheville City Center

NORTH ASHEVILLE LOT



214RobinhoodRoad.com

\$350,000 MLS#3880323
Acr:0.93 Privacy and Views
Sherwood Heights

SEVERAL LOTS AVAILABLE - GATED



ButlerMountainHighlands.com

MLS#3477077, 3477045, 3477097, 3477108
Land from \$195,000 to \$995,000
Butler Mountain Highlands

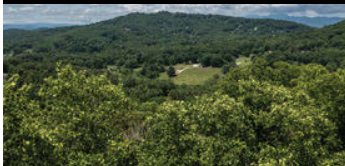
MOUNTAIN VIEWS



65Featherstone.com

\$299,000 MLS#3935725 LAND
Acr:2.15 West-Facing Mountain Views
Couch Mountain

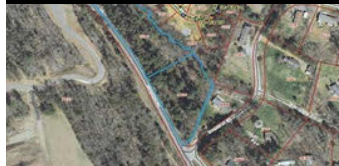
MOUNTAIN VIEWS



58SummersweetLane.com

\$265,000 MLS#3751073 LAND
Acr:5.23 Private Mountain Retreat
Willow Oak

REDUCED! ALMOST 3 ACRE PARCEL



9999 Riverside Drive, Asheville

\$174,000 MLS#3905180 and #3905174
Acr:2.84 Unimproved Commercial
High-Density Development

LOVELY STREAM AND GREAT VIEWS



192 Smokemont Drive, Arden

\$42,000 MLS#3531270 LAND
Acr:1.09 Buildable Lot with Stream
Averys Park



See examples of our tours at
bit.ly/PreferredTours

Start your move on the right foot,
search for properties and speak
with agents who know the
ins-and-outs of your next
neighborhood.
828-258-2953 or 828-210-9400

NEW LISTING UNDER CONTRACT



19 Fairhaven Court, Asheville
Will Jameson 828-337-6397

UNDER CONTRACT



96 Bass Lake Drive, Pisgah Forest
Grady Bradshaw 828-455-9630

UNDER CONTRACT



902 Timber Ln Unit #2, Asheville
Sandy Lindsey 828-230-5816

JUST SOLD!



182 Dorchester Avenue, Asheville
Judy Price 828-776-6962

JUST SOLD!



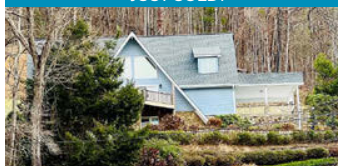
29 Kirby Road, Asheville
Jo Chandler 828-231-5444

JUST SOLD!



148 Black Iron Lane, Hendersonville
Dennis Harpell 828-606-3957

JUST SOLD!



53 Hamby Drive, Asheville
Sharon Smith 828-768-9117

JUST SOLD!



62 Greenwells Glory Drive, Biltmore Lake
Barb Fiedler 828-460-6507