



**Cozy Getaway in a Peaceful Setting** This charming 2-bedroom, 1-bath home sits on a beautifully landscaped lot in a quiet, laid-back location-just 30 minutes from downtown Asheville with easy access to Weaverville and Mars Hill. The fenced yard is great for pets or gardening, and the spacious back deck is perfect for unwinding, entertaining, or watching the sunset. Inside, enjoy the warmth of a gas log fireplace, a bright sunroom for your morning coffee, and a large bonus/flex space that can be customized to fit your needs. The high speed fiber optic internet makes this the perfect spot for a home office! Love the outdoors? The Mars Hill area offers hiking, biking, and kayaking to exploring the Appalachian Trail. Take in the views at Max Patch, spend the day at Mars Hill Recreation Park, or a bit farther to the iconic Biltmore Estate. Whether you're after a weekend retreat or a peaceful full-time home, this one has comfort, character, and easy access to nature's best. \$349,900 MLS:4272349 www.rewnc.net/650901 Call Sherri McRoberts at 828-258-3737



This easy living updated condo is located in one of Asheville's premier 55+ semi-gated communities. A 3 bedroom 2 full bath property with beautiful random wide plank wood flooring through out the home, fully renovated hallway bath and updated En Suite bath with new professional paint as well. A kitchen facelift with all new cabinets, new induction/convection range and new exhaust hood and fan along with granite countertops and tile backsplash. Coupled with recessed lighting, 18 inch solar tubes in the living room, & a private rear screened deck with automatic sun blinds overlooking a bubbling stream. A newer HVAC heat pump w/gas furnace that is warrantied through 2029. This home also comes with a pre-inspection from a licensed firm that show repairs made, positive radon numbers, plus a home warranty is offered for the new owners. A full list of current improvements/ upgrades are attached to the MLS listing. This is truly a peace-of-mind listing for any potential buyer. See it today! \$525,000 MLS:4251508 www.rewnc.net/656709 Call Bob Ray at (828) 507-7853



**Custom Log Home in Sylva - Mountain Charm Meets Comfortable Living** Discover the warmth and character of this beautifully crafted custom log home, ideally located in Sylva. Offering the perfect balance of privacy and convenience, this move-in ready home is a must-see. Step inside to a spacious great room featuring cathedral ceilings, exposed beams, and a stunning floor-to-ceiling stone fireplace-the perfect space for cozy evenings or entertaining guests. The main level offers an inviting living space with an open-concept layout and rich natural wood finishes throughout. You'll find a finished basement space with a full bath, ideal for a rec room, guest suite, home office, or studio. Outdoor living is just as impressive, with covered decks that invite you to relax and take in the mountain air. This home is just minutes from town, shops, restaurants, and outdoor adventure. Impeccably maintained and truly move-in ready, this is mountain living at its most comfortable and inviting. \$610,000 MLS:4247996 www.rewnc.net/655047 Call Sherri McRoberts 828-258-3737



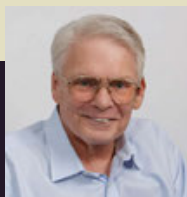
**Freshly rehabbed South facing mid century bungalow** on .40 acre lot in East Marion. Unfinished 578sf basement. Features include brand new kitchen with SS appliances, granite countertops, undermount farmhouse sink, subway tile backsplash, new HVAC, new bathrooms, new light fixtures and ceiling fans, new paint, roof, gutters, Refinished wood floors are gleaming and new LVT flooring. Updated electric and new plumbing. Welcome home! MLS:4230651 \$234,900 www.rewnc.net/650951 Call Gregory Sullins at 828-258-3737



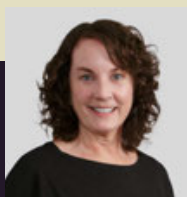
A classic 3 bedroom 2 bath one level condo in one of Asheville's prestigious semi-gated 55+ communities. Conveniently located to shopping, & entertainment venues and close to the airport, the Blue Ridge Parkway and two interstates. This unit has been elegantly maintained with nice carpet, kitchen updates, & custom window treatments. This condo complex sits on 72 spacious acres with walking trails and garden plots for those with a green thumb! Enjoy living in a maintenance free environment along with a freshly updated clubhouse that offers space for many opportunities to participate with other residents in events! You must see it today. **THIS UNIT IS THE BEST PRICED MOVE IN READY CONDO IN CROWFIELDS TODAY!** \$410,000 MLS:4231576 www.rewnc.net/650950 Call Bob Ray at (828) 507-7853



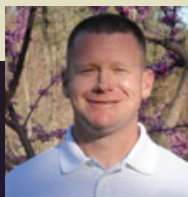
This beautiful villa type condo with 3 bedrooms and two baths all on the main floor located in the prestigious 55+ community of Crowfields is a must see. It is an end unit with wonderful privacy & finished guest/bonus room with a third full bath on a lower level. Along with easy to access storage area and private lower level patio. An upgraded and renovated kitchen area with contemporary countertops and cabinets will entice your inner chef to be creative. The three season glass deck provides a calm place for rest and reflection overlooking the private rear areas. Crowfields is a semi-gated community in south Asheville located in close proximity to shopping, medical facilities, interstate and the airport. This condo is both comfortable & functional and would serve well as a lock & go second or vacation home. The recent storm had no impact on this home. See it today. \$550,000 MLS:4192949 www.rewnc.net/653132 Call Bob Ray at (828) 507-7853



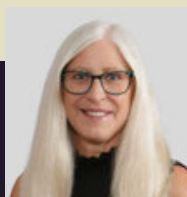
**Bob Ray**  
828-507-7853



**Sherri McRoberts**  
828-231-7659



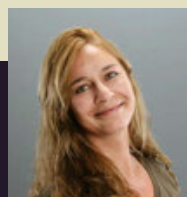
**Joey Reed**  
828-768-5976



**Cynthia Frazier**  
828-778-4556



**Greg Sullins**  
828-242-4734



**Shae Morales**  
828-280-6844