



MOSAIC

COMMUNITY LIFESTYLE REALTY

828.707.9556

Asheville's Neighborhood Realtor®
 FOCUSING ON URBAN, HISTORIC
 AND GREEN HOMES
 Our values of community and
 sustainability guide us in serving our clients.
 Find us downtown, upstairs from City Bakery!



THINKING ABOUT MAKING A MOVE?

SEE ACCURATE AND UP-TO-DATE LISTINGS AT

WWW.MYMOAICREALTY.COM

Green Homes • Downtown Condos • Luxury Homes • Walkable Homes
 Historic Neighborhoods and Homes • Homes with a Mountain View
 SEARCH BY NEIGHBORHOOD *or* INTERESTS & LIFESTYLES



STUNNING NEW HOME BY JAG CONSTRUCTION
 Steps from Carrier Park and the French Broad River
 Expansive sky and amazing mountain views
 MLS #4167475 / \$1,190,000 / 4BD/3.5BA / 0.11 Acre
 Call Mike Figura 828.337.8190



MONTFORD CRAFTSMAN WITH BASEMENT APT.
 Complete, down-to-the-studs renovation
 Main-level primary suite with large soaking tub
 MLS #4139046 / \$1,275,000 / 6BD/4.5BA / 0.47-Acre Lot
 Call Caley Bowman 828.545.5067



CONTEMPORARY MOUNTAIN OASIS
 Breathtaking, year-round, long-range views
 Just 15 minutes from downtown Burnsville
 MLS #4165276 / \$575,000 / 3BD/3BA / 1.1 Acres
 Call Amber Bennett 828.242.1596



STUNNING 26-ACRE PROPERTY IN AVERY CREEK
 4,000+ SF historic log home has space for everyone
 Two rustic cabins, both with kitchenettes and baths
 MLS #4162380 / \$3,250,000 / 5BD/3BA / 26 Acres
 Call Megan Shook 828.450.6797



PICTURESQUE PROPERTY IN BEAR RIVER LODGE
 Ideal setting for a primary residence or vacation retreat
 Hand-built fireplace, modern kitchen, custom cabinets
 MLS #4156855 / \$625,000 / 2BD/2.5BA / 1.17 Acres
 Call Shane Peters 828.691.9267



TRADITIONAL NATURAL SPLENDOR IN ARDEN
 Breathtaking, long-range mountain views
 Beautifully landscaped with community pool and trails
 MLS #4137583 / \$775,000 / 5BD/3BA / 0.38-Acre Lot
 Call Trenton Thomas 828.216.2551



CHARMING GROVE PARK RANCHER
 Daylight walk-out basement for additional living space
 Gas fireplace on main, lower level wood fireplace
 MLS #4151574 / \$899,000 / 3BD/3BA / 0.43-Acre Lot
 Call Elizabeth Putnam 828.301.6374



FREESTANDING CONDO IN EAST ASHEVILLE
 Main-level living with extra space and tons of storage
 Oversized one-car garage with more parking spaces
 MLS #4154508 / \$490,000 / 3BD/3.5BA
 Call Bill Anderson 828.974.1519



LUXURIOUS MOUNTAIN MODERN
 Single-level floor plan with vaulted ceiling
 Neighborhood lodge with a fitness center, hiking trails
 MLS #4097076 / \$1,690,000 / 3BD/5BA / 1.17 Acres
 Call Laura Moye 828.301.4518



TOP-FLOOR LUXURY CONDO IN DOWNTOWN
 Spacious, open floor plan with terrific flow
 Wonderful downtown and mountain views
 MLS #4122564 / \$499,000 / 1BD/1BA
 Call Nicholas Butts 828.707.1855



BEAUTIFULLY RENOVATED SAVL RANCH HOME
 Convenient to the Blue Ridge Parkway, Biltmore Park
 Expansive back deck overlooking mature trees
 MLS #4145553 / \$560,000 / 3BD/2BA / 0.64-Acre Lot
 Call Mike Figura 828.337.8190



BRAND-NEW, ENERGY STAR-CERTIFIED HOME
 Conveniently located in the Arden area
 Extra storage space on both levels of the home
 MLS #4136657 / \$389,000 / 3BD/2.5BA / 0.16-Acre Lot
 Call Anthony Thomas 828.582.5865



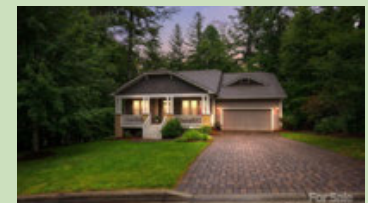
RENOVATED CONDO IN BEAUTIFUL WOODFIELD
 Soaring ceilings, two fireplaces, beautiful kitchen
 Finished basement with new flooring, two-car garage
 MLS #4128453 / \$540,000 / 3BD/4BA
 Call Caley Bowman 828.545.5067



LOVINGLY MAINTAINED HOME IN CANDLER
 Convenient location adjacent to Biltmore Lake
 Trail access to Bent Creek recreation area
 MLS #4162308 / \$450,000 / 3BD/2.5BA / 0.60-Acre Lot
 Call Stacey Enos 828.712.2069



WELL-MAINTAINED AND MOVE-IN READY
 Pristine modern home in Asheville's historic Kenilworth
 Extensive landscaping features mature trees and shrubs
 MLS #4162019 / \$845,000 / 4BD/2.5BA / 0.15-Acre Lot
 Call Wilson Hood 828.545.0551



QUALITY-BUILT, BEAUTIFULLY MAINTAINED HOME
 Corner lot in the desirable Biltmore Lake neighborhood
 Close to the lake, walking trails, community clubhouse
 MLS #4165178 / \$995,000 / 4BD/3BA / 0.89-Acre Lot
 Call Chris Findley 828.242.9775