



Freshly rehabbed South facing mid century bungalow on .40 acre lot in East Marion. Unfinished 578sf basement. Features include brand new kitchen with SS appliances, granite countertops, undermount farmhouse sink, subway tile backsplash, new HVAC, new bathrooms, new light fixtures and ceiling fans, new paint, roof, gutters, Refinished wood floors are gleaming and new LVT flooring. Updated electric and new plumbing. Welcome home! \$265,000 MLS#4230651 www.rewnc.net/650951 Call Gregory Sullins at 828-258-3737



A classic 3 bedroom 2 bath one level condo in one of Asheville's prestigious semi-gated 55+ communities. Conveniently located to shopping, & entertainment venues and close to the airport, the Blue Ridge Parkway and two interstates. This unit has been elegantly maintained with nice carpet, kitchen updates, & custom window treatments. This condo complex sits on 72 spacious acres with walking trails and garden plots for those with a green thumb! Enjoy living in a maintenance free environment along with a freshly updated clubhouse that offers space for many opportunities to participate with other residents in events! You must see it today. **THIS UNIT IS THE BEST PRICED MOVE IN READY CONDO IN CROWFIELDS TODAY!** \$449,900 MLS:4231576 www.rewnc.net/650950 Call Bob Ray at (828) 507-7853



Custom Log Home in Sylva. Mountain Charm Meets Comfortable Living Discover the warmth and character of this beautifully crafted custom log home, ideally located in Sylva. Offering the perfect balance of privacy and convenience, this move-in ready home is a must-see. Step inside to a spacious great room featuring cathedral ceilings, exposed beams, and a stunning floor-to-ceiling stone fireplace-the perfect space for cozy evenings or entertaining guests. The main level offers an inviting living space with an open-concept layout and rich natural wood finishes throughout. You'll find a finished basement space with a full bath, ideal for a rec room, guest suite, home office, or studio. Outdoor living is just as impressive, with covered decks that invite you to relax and take in the mountain air. This home is just minutes from town, shops, restaurants, and outdoor adventure. Impeccably maintained and truly move-in ready, this is mountain living at its most comfortable and inviting. \$624,900 MLS:4247996 www.rewnc.net/655047 Call Sherri McRoberts 828-258-3737



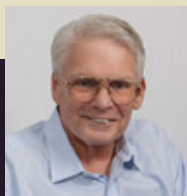
Unique 2 Home Opportunity in the Enka /Candler area! Two- 1 story modular homes built in 2002 and connected by a double garage on a .95 acre lot. Each home faces East overlooking the expansive front yard and has 2BR/2BA and a Bonus room w/closet. All walk in closets. New roof, gutters and drainlines. Open floorplan features woodburning fireplace in living room open to the dining area. Vinyl plank flooring throughout each unit. Separate laundry room off kitchen with door into shared garage. Shared well and shared septic system. Each home has a front and rear deck. Privacy fence in rear and partial fencing on the side yard. One of the units has new decks, a brand new kitchen, new paint, LVP flooring and new bathrooms. \$454,900 www.rewnc.net/658441 MLS:4214038 Call Gregory Sullins at 828-258-3737



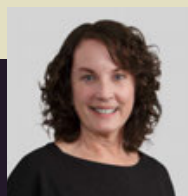
This beautiful villa type condo with 3 bedrooms and two baths all on the main floor located in the prestigious 55+ community of Crowfields is a must see. It is an end unit with wonderful privacy & finished guest/bonus room with a third full bath on a lower level. Along with easy to access storage area and private lower level patio. An upgraded and renovated kitchen area with contemporary countertops and cabinets will entice your inner chef to be creative. The three season glass deck provides a calm place for rest and reflection overlooking the private rear areas. Crowfields is a semi-gated community in south Asheville located in close proximity to shopping, medical facilities, interstate and the airport. This condo is both comfortable & functional and would serve well as a lock & go second or vacation home. The recent storm had no impact on this home. See it today. \$595,000 MLS:4192949 www.rewnc.net/653132 Call Bob Ray at (828) 507-7853



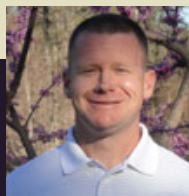
Beautiful large 1 bedroom 1 bath condominium. This condo is located on the second floor and is on the back side of building overlooking playground and picnic area. Bathroom has new shower enclosure, new ceiling lights and fans and large walk in closet in bedroom. Located in an established community with many amenities including: Swimming Pool, Fitness Center, Business Center with WIFI, Nature Paths, Playground and Dog Park. Beautiful and sought after community a perfect lock & go vacation or second Asheville home or primary residence. An affordable property this one won't last long. \$223,700 MLS:4215293 www.rewnc.net/658440 Call Bob Ray at (828) 507-7853



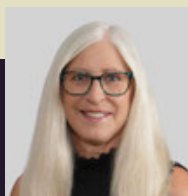
**Bob Ray**  
828-507-7853



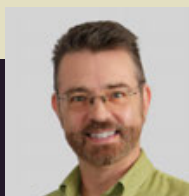
**Sherri McRoberts**  
828-231-7659



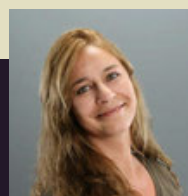
**Joey Reed**  
828-768-5976



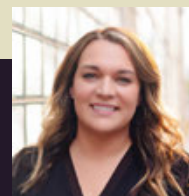
**Cynthia Frazier**  
828-778-4556



**Greg Sullins**  
828-242-4734



**Shae Morales**  
828-280-6844



**Lauren Whitmire**  
828-553-2643