

A P P A L A  H I A N



Realty Associates



23 Arlington Street,
Asheville, NC

(828) 255-7530

www.appalachianrealty.com



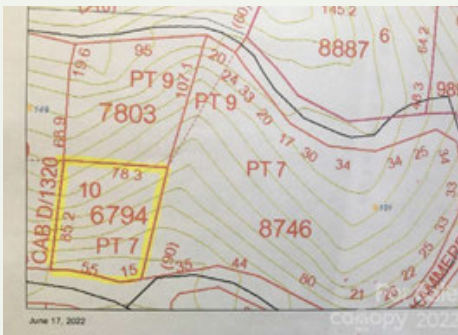
Mountain lot conveniently located to downtown Asheville and the Blue Ridge Parkway. This lot adjoins Town Mountain Road and offers the possibility of long and short range views. Southern exposure \$199,000
MLS:4126242 www.rewnc.net/658102
Call Mark Mathews at 828-691-1317



Mountain lot conveniently located to downtown Asheville and the Blue Ridge Parkway. This lot adjoins Town Mountain Road and offers the possibility of long and short range views. Southern exposure \$249,000
MLS:4125897 www.rewnc.net/658088
Call Mark Mathews at 828-691-1317



This is your opportunity to own a piece of the Shope Creek Valley! This gently sloping lot is both private and peaceful and features an abundance of old growth trees. It features a home site, quality community road access, potential westerly views across the valley. This property carries water rights to a shared well adjacent to the property, to alleviate the burden of digging your own personal well. Buyer to verify the current status of the HOA, but there is an annual road maintenance fee of \$600 and shared well fee of \$10 per month. Due to limited parking on the property for viewing, single vehicle visits are preferred and listing appointments are encouraged. Agent notes provide additional information. \$79,000 MLS:4069987
www.rewnc.net/652045
Call Mahalia Kennedy at 843-452-3241



This is a unique Lake Junaluska platted small .14 acre residential building lot with excellent public road access. The location is a short distance from the magnificent lake and all the quality amenities of the Lake Junaluska Conference Center. As per Lake Junaluska Public Works, public water and sewer are available and accessible. \$25,000 MLS:3897501 www.rewnc.net/660437
Call Bill Palas at 828-691-7194



This North Asheville buildinglot offers stunning views and southern exposure, making it a perfect spot for your next home. It provides great value for its prime location. Just minutes from downtown Asheville and the scenic Blue Ridge Parkway, you'll have the best of both worlds-privacy and nature, combined with easy access to city amenities. Don't miss out on this exceptional opportunity! \$195,000 MLS:4209341
Call Mark Mathews at 828-691-1317
www.rewnc.net/651058



10-acre parcel of land nestled in the serene beauty of Black Mountain. Located on a paved road and equipped with underground utilities, this property offers the tranquility of a forested setting while maintaining convenient access to amenities in Black Mountain, less than 6.5 miles away. A short 30-minute drive to Asheville, this versatile parcel presents a unique opportunity for those seeking both seclusion and accessibility. \$125,000 MLS:4216078
www.rewnc.net/659516
Call Sona Merlin at 828-216-7908